

New Season
Starts
Monday 14th
September!



New Season

We are about to start our new season and would love to be saying hello to new members - whatever your level of experience of photography, you will be more than welcome.

There will be opportunities to discuss and learn new techniques as well as see some great presentations/slideshows from our visiting speakers and members.

The season opens on **MONDAY 14th SEPTEMBER**, meeting at [Stocksbridge Library](#) for an informal first session - a social evening for existing and new members, as well as a display of prints and a screening of images.

Please come and see us and if you like it, then feel free to join the group!

Programme for the first few months

SEPTEMBER 2009

14th—Social Evening & Welcome to the Start of the Season -Members to bring Prints/ Slides/Digital please

21st—2009 PAGB Inter-Federation Print Competitions & Exhibition—CD showing the Entries from this year

28th—Portrait Evening with John Ulrich L.R.P.S.

Bring your cameras and enjoy an evening of photography & instruction

OCTOBER 2009

5th—Speaker *Colin New 'Going South'

A talk on Colin's visit to the Antarctic with Prints

12th—Desk Top Auction Evening—Please donate unwanted equipment,books, magazines etc to be auctioned for Club Funds

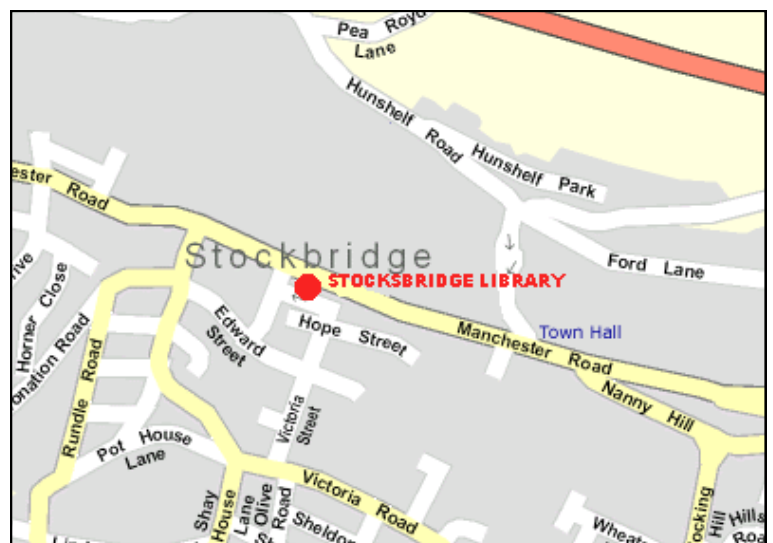
19th—Digital Instruction Evening Training session

26th—1st Seasonal Competition (Judge *Tony Elliott APAGB)

Stocksbridge Photographic Society

meets on Mondays between September and May at
Stocksbridge Library,
Manchester Rd,
Stocksbridge S36 1DH

7.45pm meeting starts at 8.00pm



Directions on next page



**Stocksbridge
Photographic
Society**

**New Season
Starts
Monday 14th
September!**



HOW TO GET TO STOCKSBRIDGE:-

FROM THE SOUTH VIA M1

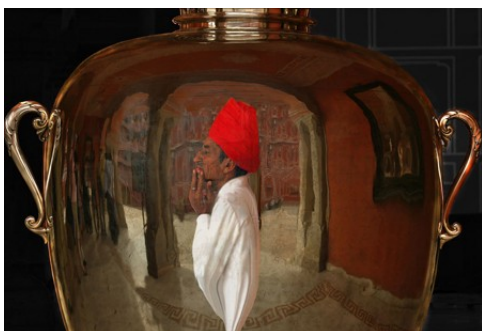
1. Exit M1 at Junction 35A
2. Follow A616 Manchester (A628)
3. Exit Stocksbridge By-pass at Deepcar turn off and turn left off exit slip road
4. Turn right at 1st traffic lights on Vaughton Hill and follow main road (B6088 Manchester Road) through Deepcar to Stocksbridge.
5. Stocksbridge Library is situated on the left hand side of Manchester Road at the end of the Shopping Precinct

FROM THE NORTH VIA M1

1. Exit M1 at Junction 36
2. Follow A61 Sheffield North to first roundabout
3. Take third exit at roundabout onto A616 Manchester (A628)
4. Exit Stocksbridge By-pass at Deepcar turn off and turn left off exit slip road
5. Turn right at 1st traffic lights on Vaughton Hill and follow main road (B6088 Manchester Road) through Deepcar to Stocksbridge
6. Stocksbridge Library is situated on the left hand side of Manchester Road at the end of the Shopping Precinct

FROM SHEFFIELD VIA A6102

1. Follow A6102 (Manchester) Road through Middlewood, Oughtibridge & Wharncliffe Side to Deepcar
2. At traffic lights on entering Deepcar, keep straight on along B6088 to Stocksbridge
3. Stocksbridge Library is situated on the left hand side of Manchester Road at the end of the Shopping Precinct
4. Stocksbridge is also served by a good bus service from Sheffield City Centre



**See you on Monday 14th
September — if you can't
make that one — come soon
after — we'll always be glad
to see you!**